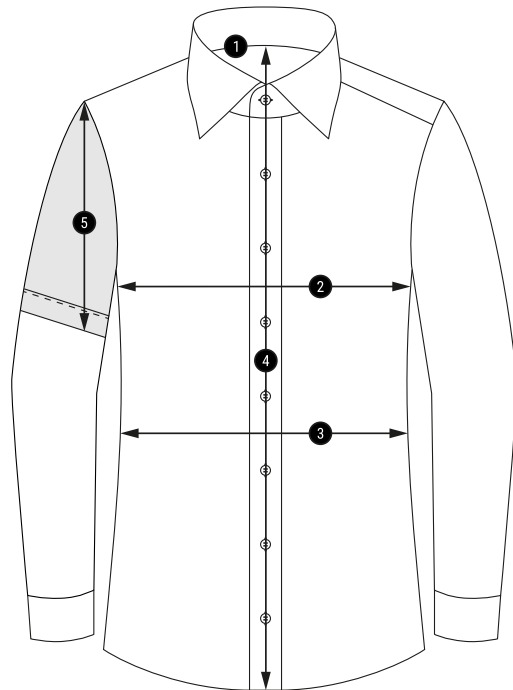


REDMOND®



Chemises d'affaires

Tableau de mesures standard standard measurement chart



| 1 | Tailles Encolure collar sizes | cm inch | | XS | S | M | L | XL | XXL | 3XL | 4XL | 5XL | 6XL |
|---|--|---------------------|--|-------------|-----------------|------------------|-----------------|-----------------|-----------------|-----------------|------------------|------------|------------|
| | | | | 36 14 | 37/38 14½/15 | 39/40 15½/15¾ | 41/42 16/16½ | 43/44 17/17½ | 45/46 17¾/18 | 47/48 18¾/19 | 49/50 19¾/19¾ | 52 20½ | 54 21¼ |
| 2 | Tour de poitrine chest measurement | regular/comfort fit | | 102 | 110 | 118 | 126 | 134 | 144 | 154 | 164 | 170 | 180 |
| | | modern fit | | 100 | 108 | 116 | 124 | 132 | 138 | 146 | | | |
| | | slim fit | | 98 | 104 | 110 | 116 | 124 | 132 | | | | |
| | | modern fit | | 94 | 100 | 106 | 112 | 122 | 132 | 142 | | | |
| 3 | Tour de taille waist measurement | regular/comfort fit | | 98 | 106 | 114 | 122 | 134 | 144 | 154 | 164 | 172 | 182 |
| | | modern fit | | 94 | 100 | 106 | 112 | 122 | 132 | 142 | | | |
| | | slim fit | | 86 | 92 | 98 | 104 | 112 | 120 | | | | |
| | | modern fit | | 81 | 86 | 91 | 96 | 101 | 106 | 111 | 116 | 121 | 126 |
| 4 | Longueur de coque à LM 66 body length for SL 66 | regular/comfort fit | | 81 | 82 | 82 | 83 | 85 | 88 | 90 | 90 | 93 | 93 |
| | | modern fit | | 77 | 78 | 79 | 81 | 84 | 86 | 88 | | | |
| | | slim fit | | 73 | 75 | 78 | 78 | 81 | 81 | | | | |
| | | modern fit | | 81 | 82 | 83 | 85 | 88 | 90 | 92 | | | |
| 5 | Manche courte short sleeve | regular/comfort fit | | 28 | 28 | 28 | 28 | 28 | 28 | 30 | 30 | 30 | 30 |
| | | modern fit | | 27,5 | 27,5 | 27,5 | 27,5 | 27,5 | 27,5 | 27,5 | 27,5 | | |
| | | slim fit | | 24 | 24 | 24 | 24 | 24 | 24 | | | | |